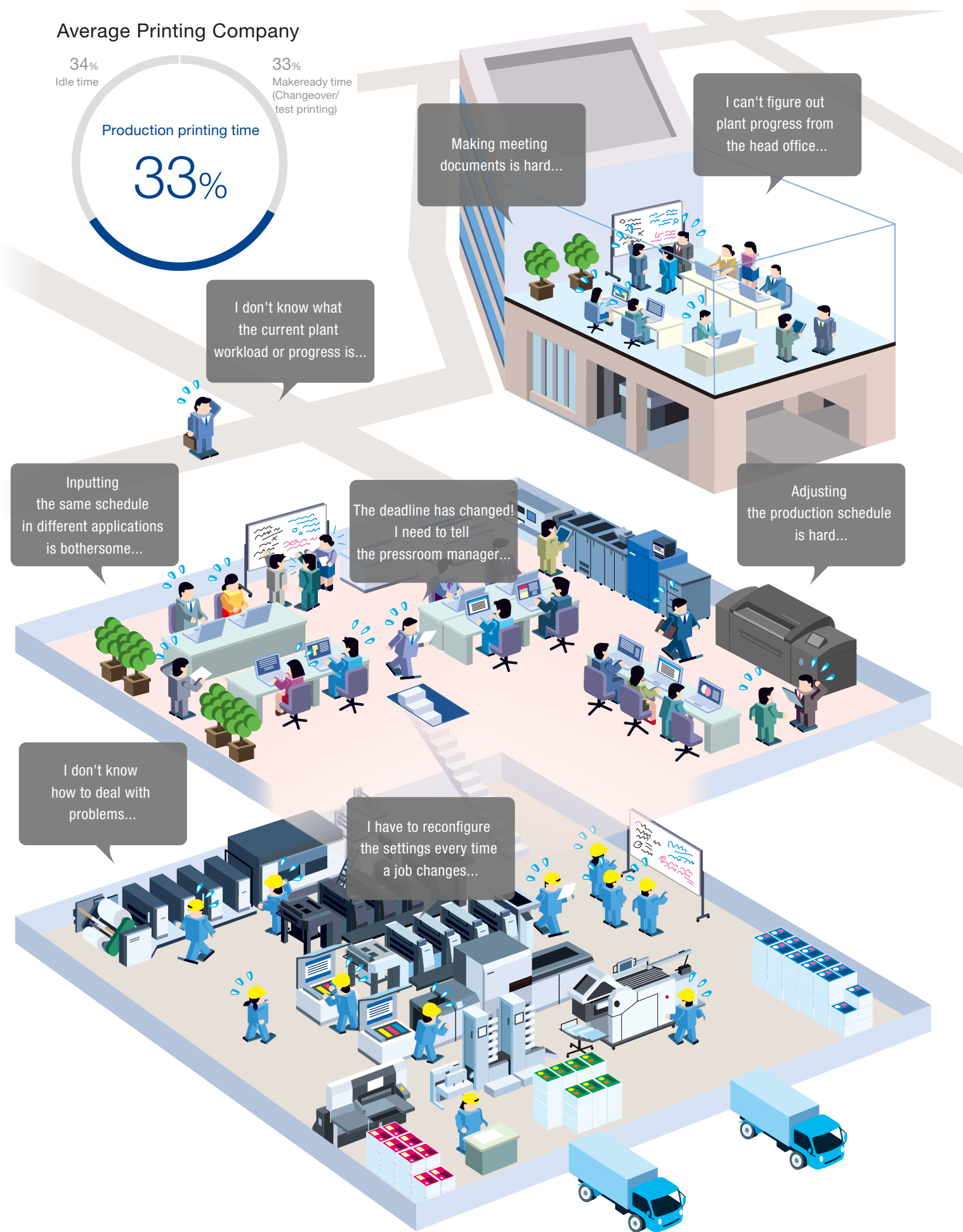
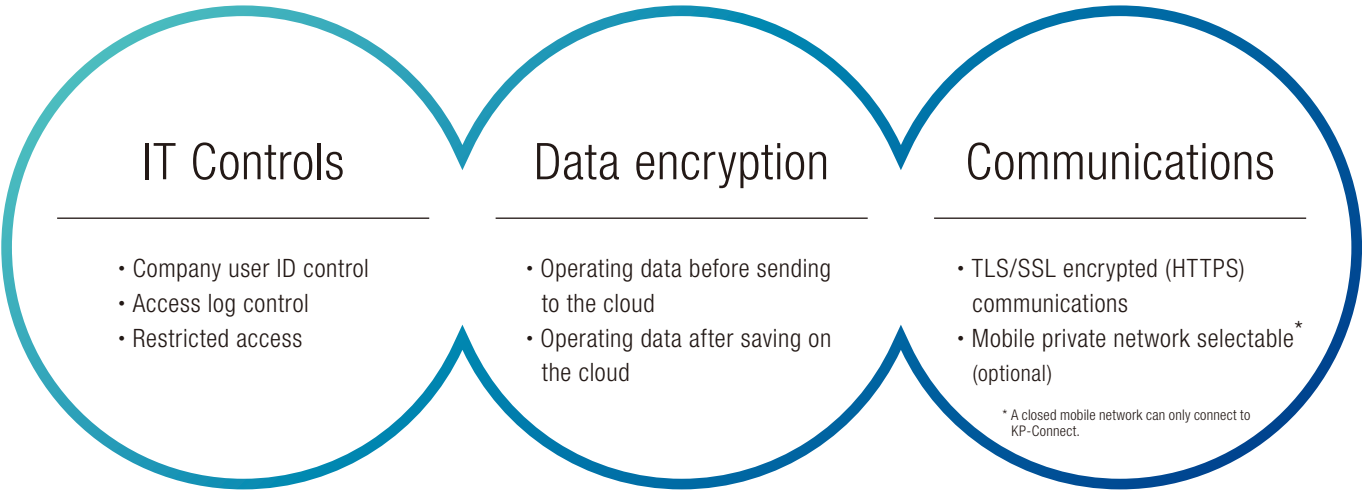


hidden everywhere.



KP-Connect is serious about security.



Notes on Use of KP-Connect

- Security measures for the user's network environment are the responsibility of the user.
- Collected information will be used solely for the purpose of providing KP-Connect service and making improvements to Komori products and services.
- Please apply to use KP-Connect service after reading the terms of use in advance.

* The deployment items and time differs depending on the area. Contact a Komori representative for details.

Note:
Komori reserves the right to change specifications of the products noted in this catalog without notice for the purpose of improving reliability, functions or design. Komori is not liable for the use of this product outside of the prescribed safety regulations and precautions. The technical information in this catalog explains the general operation of the product and does not constitute a guarantee or license of rights possessed by Komori or a third party.
The photographs in this catalog include some special specifications. Figures in specifications are valid as of February 2023. Photographs are subject to change at a later date.

KP-Connect

Providing Komori solutions that dramatically improve printing company productivity.



The current issues in printing production are solved with KP-Connect that supports visualizing production and printing process management.

According to the Komori Survey data, printing press operation time for production printing for the average job amounts to only 33%*.

The time the machine is idle for preparation and errors is by far longer.

Visualization of production is essential for improving work efficiency and reducing costs.

* In-house survey. Of the 45 companies that have the KHS-AI, the results were calculated from 31 companies that mainly use four colors and excludes package users.

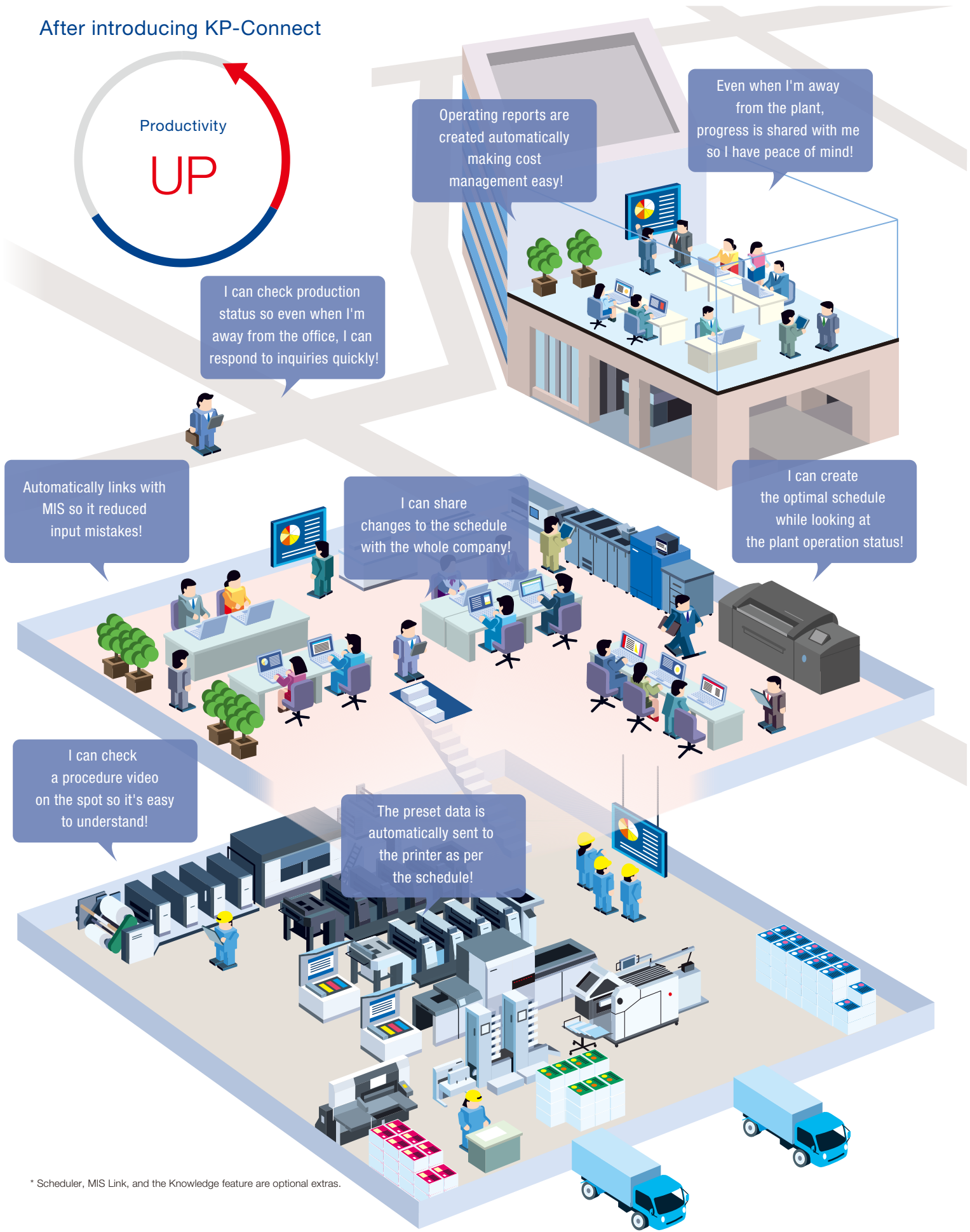
Common Problems

Pressroom inefficiency is hard to manage

Operator skill is not standardized

Sales and the work site cannot share information

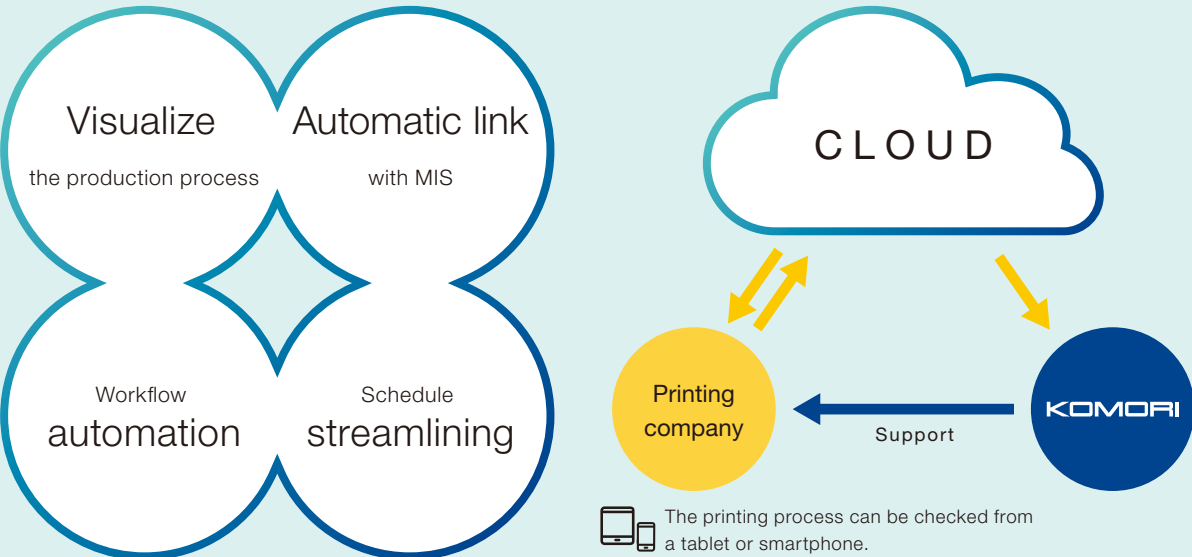
Process management methods are analogical so human errors are never-ending



* Scheduler, MIS Link, and the Knowledge feature are optional extras.

Discovering print production issues and streamlining print production

KP-Connect is a tool that links print manufacturing processes and makes them visible, automatic and labor saving, that Komori as a press manufacturer can deliver.



Two levels of support, for solutions tailored to specific needs

You can start using KP-Connect to visualize just one machine. You can upgrade at a later date if necessary.

Steps to introduce KP-Connect

STEP 1

KP-Connect Basic

Visualizing the latest Komori machines and proposing improvement measures

Automatically collects various information from a printing press to help improve production through data analysis.

STEP 2

KP-Connect Pro

Visualizing all printers

An iPad can be used to record the performance of all printing press, including printing press made by other manufacturers. Monitoring real-time Progress and output of results to an Excel file is also possible.

STEP 3

KP-Connect Pro + Option

Streamline the printing process

You can select scheduler and MIS link options. An overall optimization of the printing workflow can be achieved.